

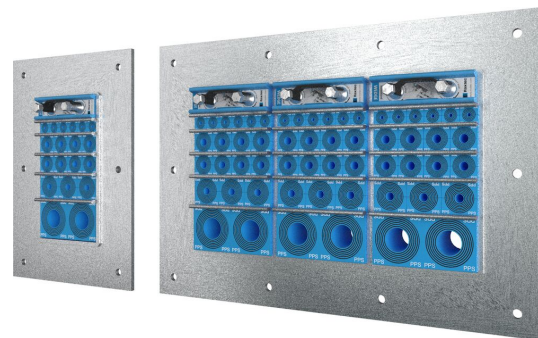


# Passaggio Roxtec GH per condotti in plastica

Passaggio resistente al fuoco per condotti in plastica.

Roxtec GH per condotti in plastica è un passaggio per il fissaggio mediante imbullonatura a strutture uniformi come pareti/pavimenti in acciaio o sandwich che necessitano della resistenza al fuoco. Il telaio rettangolare in acciaio consente l'instradamento di condotti ad alta densità di cavi. I moduli di sigillatura Roxtec RM PPS per condotti in plastica sono contrassegnati con la NW corrispondente per semplificare l'installazione e possono essere combinati con i normali moduli RM per un mix di condotti e cavi nello stesso telaio.

- Facilità di manutenzione e controllo
- Consente capacità di riserva integrata



## Caratteristiche



Resistenza al fuoco



IP/UL NEMA

## Struttura dell'installazione



Pannello sandwich



Metallo

## Tipo di montaggio



Imbullonatura

## Ratings e certificati

### Fuoco

- Classificazione E/EI secondo EN 45545 E60

### Tenuta

- IP 66/67

## Dimensioni telaio

mm/kg

Le varianti di telaio seguenti rappresentano una selezione limitata. Per la gamma completa di telai e configurazioni, visita [roxtec.com](https://www.roxtec.com).

Titolo	Aperture del telaio	Spazio di riempimento	Dimensioni esterne WxHxD	Dimensioni apertura w x h	Peso	Art. Nr.
GH 6x1 GALV	1	120 x 180	252.5 x 350 x 60	148(+5/-5) x 245(+5/-5)	4.4	5GH0000007882
GH 6x2 GALV	2	120 x 180	383 x 350 x 60	278(+5/-5) x 245(+5/-5)	7.5	5GH0000007828
GH 6x3 GALV	3	120 x 180	513.5 x 350 x 60	409(+5/-5) x 245(+5/-5)	10.4	5GH0000008108
GH 6x1 AISI316	1	120 x 180	252.5 x 350 x 60	148(+5/-5) x 245(+5/-5)	4.9	5GH0000008261
GH 6x2 AISI316	2	120 x 180	383 x 350 x 60	278(+5/-5) x 245(+5/-5)	7.3	5GH0000008179
GH 6x3 AISI316	3	120 x 180	513.5 x 350 x 60	409(+5/-5) x 245(+5/-5)	10.1	5GH0000009292

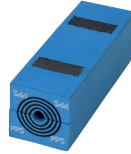


## Dati relativi ai componenti

### Componenti per la sigillatura



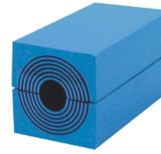
Lubrificante



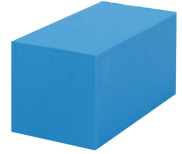
Modulo RM PPS con Multidiameter™



Wedge kit e Wedge Roxtec



Modulo RM con Multidiameter™



Blocco di riempimento RM



Piastra di ancoraggio Roxtec

Per informazioni dettagliate, visita la pagina [roxtec.com](https://www.roxtec.com).

The product information provided by Roxtec does not release the purchaser of the Roxtec system, or part thereof, from the obligation to independently determine the suitability of the products for the intended process, installation and/or use.

Roxtec gives no guarantee for the Roxtec system or any part thereof and assumes no liability for any loss or damage whatsoever, whether direct, indirect, consequential, loss of profit or otherwise, occurred or caused by the Roxtec systems or installations containing components not manufactured by an authorized manufacturer and/or occurred or caused by the use of the Roxtec system in a manner or for an application other than for which the Roxtec system was designed or intended.

Roxtec expressly excludes any implied warranties of merchantability and fitness for a particular purpose and all other express or implied representations and warranties provided by statute or common law. User determines suitability of the Roxtec system for intended use and assumes all risk and liability in connection therewith. In no event shall Roxtec be liable for indirect, consequential, punitive, special, exemplary or incidental damages or losses.

The Roxtec products are offered and sold in accordance with the conditions of the Roxtec General Terms of Sales. The latest version of the Roxtec General Terms of Sales can be downloaded from <https://www.roxtec.com/en/about-us/about-roxtec/general-terms-of-sales/>

We reserve the right to make changes to the product and technical information without further notice. Any errors in print or entry are no claims for indemnity. The content of this publication is the property of Roxtec International AB and is protected by copyright.

This document was generated on: 2024-04-23